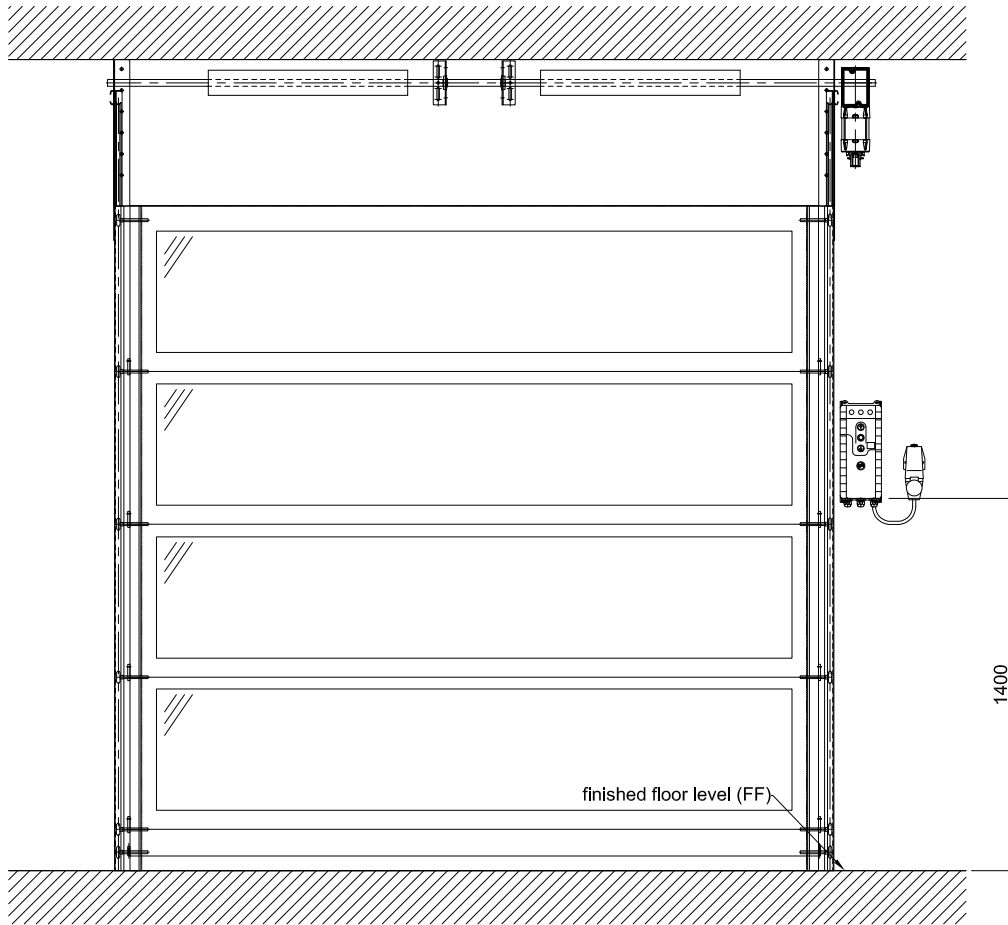
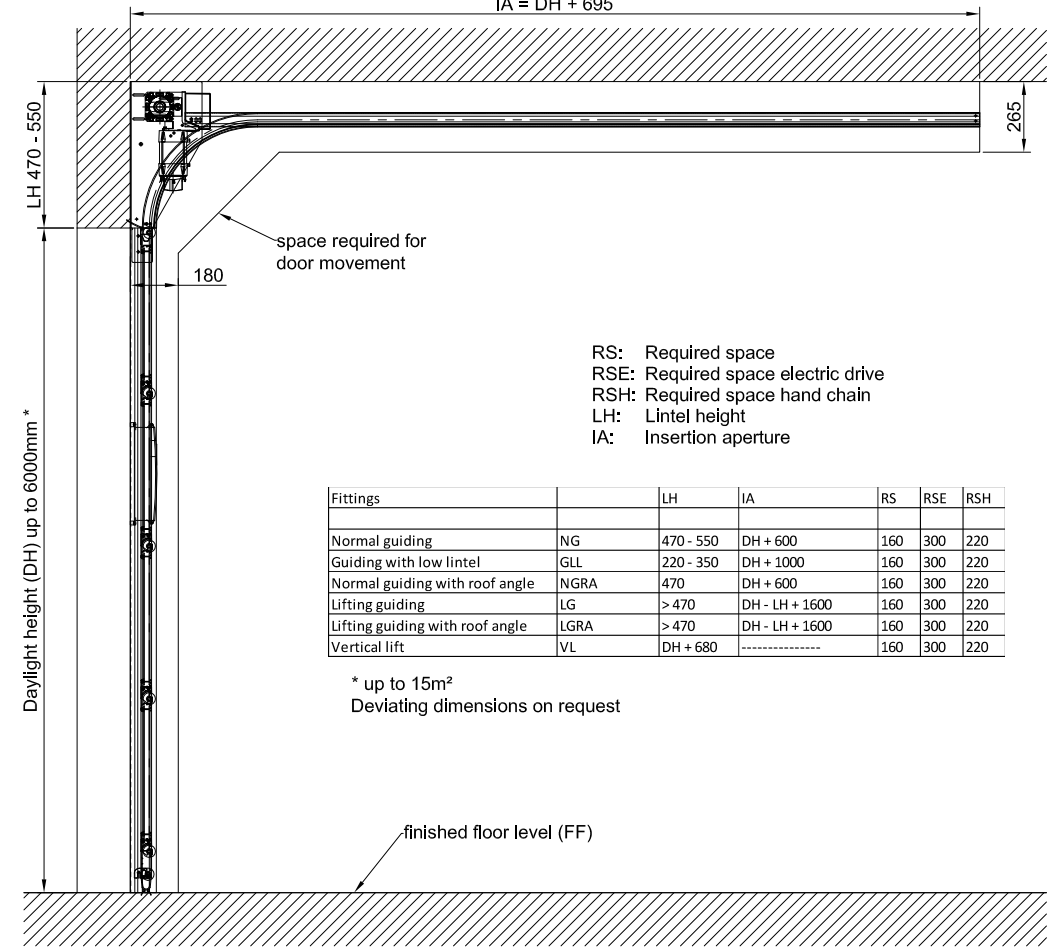


Hingless sectional door pro lux

General inside view



Vertical section

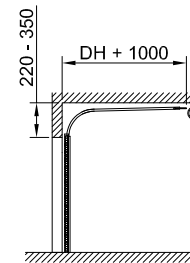
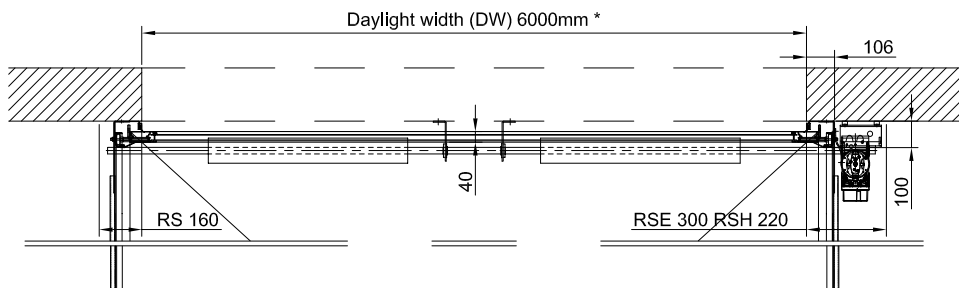


RS: Required space
 RSE: Required space electric drive
 RSH: Required space hand chain
 LH: Lintel height
 IA: Insertion aperture

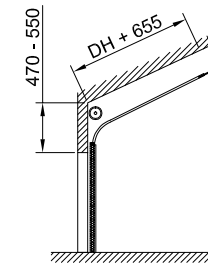
Fittings		LH	IA	RS	RSE	RSH
Normal guiding	NG	470 - 550	DH + 600	160	300	220
Guiding with low lintel	GLL	220 - 350	DH + 1000	160	300	220
Normal guiding with roof angle	NGRA	470	DH + 600	160	300	220
Lifting guiding	LG	> 470	DH - LH + 1600	160	300	220
Lifting guiding with roof angle	LGRA	> 470	DH - LH + 1600	160	300	220
Vertical lift	VL	DH + 680	-----	160	300	220

* up to 15m²
 Deviating dimensions on request

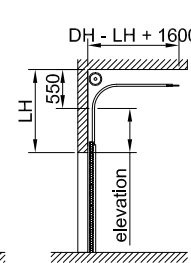
Horizontal section



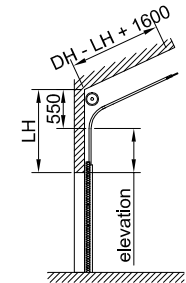
Guiding with low lintel



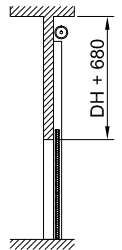
Normal guiding following roof angle



Lifting guiding



Lifting guiding following roof angle



Vertical lifting

All information and illustrations without obligation. Technical changes reserved. Deviating dimensions on request.