



Protection in new dimensions

**JANSEN TORE** GmbH & Co. KG

- Fire gates
- Acoustic gates
- Security gates
- Industrial gates
- Conveyor system closures

# FIRMLY ROOTED

## OUR HISTORY

There was no way that graduate engineer Ludwig Jansen could have

foreseen the dimensions his company would one day assume when he founded Jansen Tore, which specialises in the production of high-quality gate systems to this very day, in Surwold in Lower Saxony back in 1981.

A further company, Jansen Brandschutz, was founded in 1999. Jansen remains a leading supplier of fire and smoke gates, innovative special soundproofing solutions, explosion protection, anti-burglary protection, bulletproofing

and custom products for exhibition and event halls.

The company manages to stand out from the competition and find a niche on the market by manufacturing a wide variety of fire gate types and special gate constructions in outsized dimensions.

In the meantime, Jansen Holding has expanded its operations to include the maritime sector too and specialises in the production of various gate

solutions for shipbuilding. In addition, spatial systems in combination

with fire safety and soundproofing provide comprehensive solutions for building construction and industrial customers.

Jansen Tore now has more than 270 employees.

It also has branch offices and selling agencies throughout Germany. Internationally, it is represented by a subsidiary in Denmark, as well as licensees and distribution partners in Austria, Switzerland and the Czech Republic.

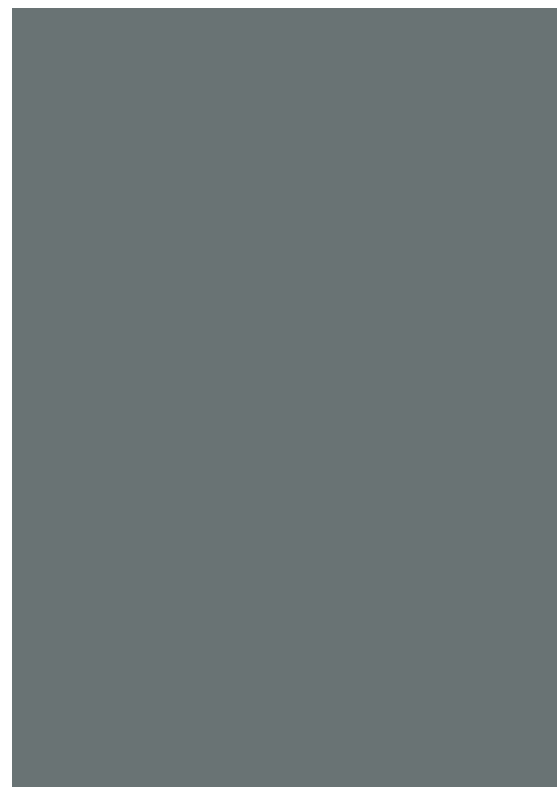
“They discuss and implement special solutions in detail with the customer.

**I’m absolutely delighted!”**

R. on Jansen | Proven Expert Review







# JANSEN FIRE GATES

## GATES IN NEW DIMENSIONS

We are among Germany's leading suppliers of fire and smoke gates, innovative special solutions and custom products.

We are particularly well known for developing and manufacturing them in extra large dimensions for a very wide range of applications.

Our quality management, which is certified in accordance with DIN EN ISO 9001, enables us to satisfy customer requirements at the highest level.



## ROLLER GATES

- Unique: El<sub>2</sub> 30 C2 roller gate with smoke protection (S<sub>a</sub> or S<sub>200</sub>)
- Can be used as a counter shutter, for example, with raised installation



## SECTIONAL GATES

- El<sub>2</sub> 30 C2 & El<sub>2</sub> 90 C2 with smoke protection (S<sub>a</sub> or S<sub>200</sub>)
- El<sub>2</sub> 30 C2 also available with wicket
- With unique low head-room turn from 250 mm



## STACKING GATES

- El<sub>2</sub> 30 C2 & El<sub>2</sub> 90 C2
- Multifunctional: suitable for continuous use
- Suitable for extra large dimensions



## LIFTING GATES

- El<sub>2</sub> 30 C2 & El<sub>2</sub> 90 C2 with smoke protection (S<sub>a</sub> or S<sub>200</sub>)
- Suitable for extra large dimensions
- Option: Thresholdless wicket (1,250 x 2,000 mm)
- Also available as El<sub>2</sub> 30 C2 S<sub>a</sub> and El<sub>2</sub> 90 C2 S<sub>a</sub> telescopic lifting gate



## OVERHEAD STACKING GATES

- El<sub>2</sub> 30 C2 & El<sub>2</sub> 90 C2 with smoke protection (S<sub>a</sub> or S<sub>200</sub>)
- Ideal for installation situations where not much space is available





### SLIDING GATES

- 1- and 2-leaf sliding gates and telescopic sliding gates
- Option: Invisible fire protection with pocket flaps
- No intrusive lead-in profile on request
- Smoke protection with thresholdless wicket (1,250 x 2,000 mm)



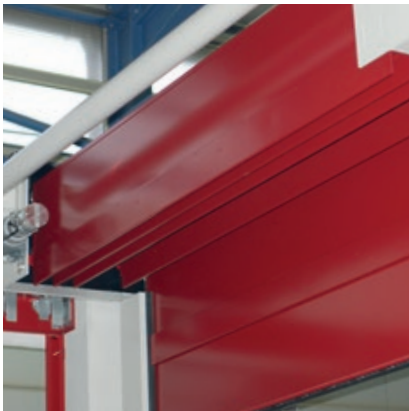
### TEXTILE-FLEXIBLE SYSTEMS

- Invisible fire and smoke protection
- Not much space required
- Low weight



### CLOSURES FOR CONVEYOR SYSTEMS

- Separated and unseparated conveyor system closures
- Long operational lifetime, constant functional check and low maintenance costs



### A-60 OVERHEAD STACKING GATES

- Custom options for surfaces and electrical components



### A-0 ROLLER SHUTTER

- High-grade steel or stainless steel
- Electric drive only



# JANSEN SECURITY GATES



## INDIVIDUAL, OUTSIZED AND PROTECTION WITH- OUT LIMITS

Jansen is a leading supplier of innovative special gates and custom products in Germany, and is particularly well known for also developing and manufacturing special constructions outside the approved range.

Jansen's 'SafeLine' [WK5 anti-burglary gate](#) is a real deterrent for burglars, as it is tested in accordance with DIN V ENV 1627-1630:1999-04, WK5. Under the WK5 standard, an experienced offender attempts to break the locked component open within the specified resistance time of 15 minutes.





### ANTI-BURGLARY GATES

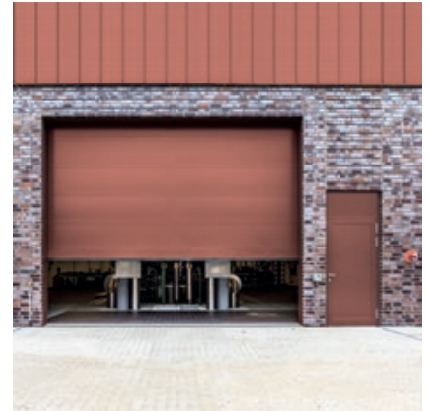
- Sectional gates up to WK5\*
- Sliding gates up to WK3\*

\* DIN V ENV 1627-1630:1999-04



### BULLETPROOF GATES

- Bulletproofing in accordance with EN ISO 1522
- Sectional gates up to FB4 NS
- Gate can have windows



### ATEX GATES

- Use in potentially explosive atmospheres in ATEX zones 1 and 2 (gases) or 21 and 22 (dust)
- Available as a sectional or roller gate
- Can be combined with noise and fire protection requirements\*\*



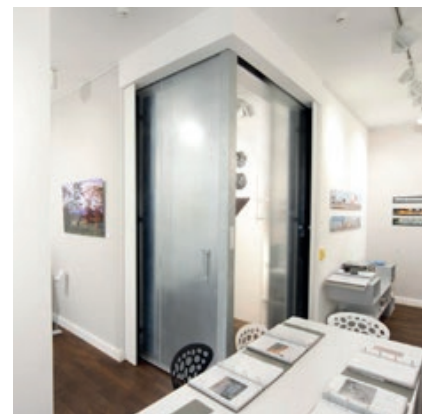
### MODULAR SYSTEM

- Modular custom gates for special installation situations
- Different fire, noise and explosion protection requirements combined in one fully customised gate



### SPECIAL SIZES

- Gates without limits – you decide the size!
- Custom production to customer specifications
- Special technical requirements such as a higher noise reduction value can be accommodated



### SPECIAL CONSTRUCTIONS

- We make the impossible possible – Set us a challenge!



# JANSEN INDUSTRIAL GATES



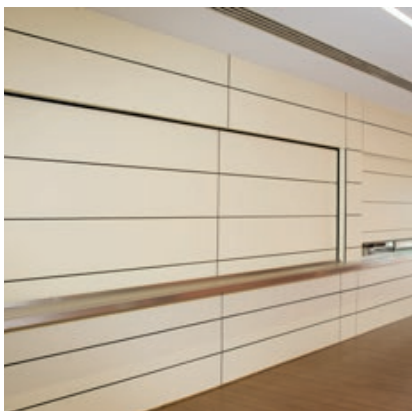
## BIGGER, FASTER, WIDER

We have been manufacturing, installing, maintaining and servicing our own gates for more than four decades, as well as providing third-party servicing.

But our speciality is developing and manufacturing high-quality gate systems. Large sizes and individual design are no problem for our renowned company. We will develop, manufacture and install your gate with top quality guaranteed.







## CLAD SECTIONAL GATES

- Individual design by means of cladding with a wide variety of materials, such as wood and metal, for example, to improve the appearance of the gate
- Also available as a counter shutter



## ACOUSTIC GATES

- Sectional gates up to 48 dB
- Roller gates up to 54 dB
- Sliding gates 45 dB



## SECTIONAL GATES

- Widths/heights of up to 12 m possible
- Hingeless design meets the highest appearance, security and longevity requirements
- With glazing, wickets or matching side gates



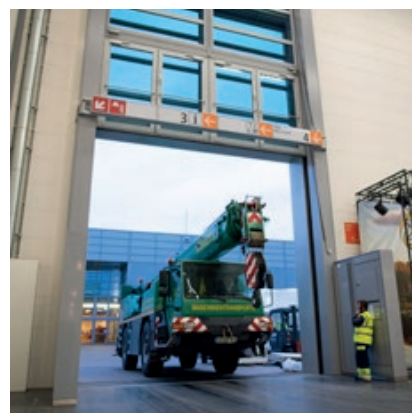
## POLYCARBONATE SECTIONAL GATES

- For well-lit interiors and shadow-free illumination
- Large gate sizes up to 12 m
- 80 mm or 44 mm thick
- Excellent insulation values
- Good long-term performance thanks to UV protection



## FACADE GATES

- Flush-mounted
- Design customised to your individual requirements



## EXHIBITION HALL GATES

- Special solutions for exhibition halls and event venues with fire safety and/or soundproofing requirements
- SHE air intake function

# BRANCH OFFICES NATIONAL

## BRANCH OFFICE NORTH

Thorsten von Hagen  
Am Wattberg 51  
26903 Surwold  
Tel: +49 (0) 4965 / 8988-310  
thorsten-vonhagen@jansentore.com

## BRANCH OFFICE NORTH

Christian Hollermann  
Papenreye 51  
22453 Hamburg  
Tel: +49 (0) 40 / 57 01 833-0  
christian-hollermann@jansentore.com

## BRANCH OFFICE WEST

Lutz Wennmann  
Friedrichstr. 55 (Gewerbepark Halle 4)  
42551 Velbert  
Tel: +49 (0) 2051 / 94 843-10  
lutz-wennmann@jansentore.com

## BRANCH OFFICE CENTRAL

Dietmar Heinz  
Am Mönchenfelde 23  
38889 Blankenburg  
Tel: +49 (0) 3944 / 657-28  
dietmar-hinz@jansentore.com

## BRANCH OFFICE CENTRAL

Jörn Otromke  
Bitterfelder Str. 12  
12681 Berlin  
Tel: +49 (0) 30 / 930 20 93-15  
joern-otromke@jansentore.com

## BRANCH OFFICE CENTRAL

Uwe Hille  
Am Berg 10  
01665 Klipphausen  
Tel: +49 (0) 351 / 45 415-54  
uwe-hille@jansentore.com

## BRANCH OFFICE SOUTHWEST

Thorsten Keiner  
Garbenheimer Str. 14  
35578 Wetzlar  
Tel: +49 (0) 6441 / 38 308-11  
thorsten-keiner@jansentore.com

## BRANCH OFFICE SOUTH

Thomas Schlak  
Porschestra. 11  
73278 Schlierbach  
Tel: +49 (0) 7021 / 86999-11  
thomas-schlak@jansentore.com

## BRANCH OFFICE SOUTHEAST

Stefan Marxmüller  
Grasslfinger Str. 14  
85232 Bergkirchen-Feldgeding  
Tel: +49 (0) 8251 / 8640582  
stefan-marxmueller@jansentore.com





# DISTRIBUTION PARTNERS INTERNATIONAL

## DENMARK

Jansen Tore Denmark ApS  
Bautavej 1A - Hasle  
8210 Aarhus V  
Tel: +45 30 94 62 00  
claus-prang@jansentore.com

## SWITZERLAND

Stawin AG  
Dättlikonerstrasse 5  
8422 Pfungen  
Tel: +41 (0) 52 23 / 40 20 2  
Fax: +41 (0) 52 23 / 40 20 1  
info@stawin.com

## CZECH REPUBLIC

JaP - Jacina s.r.o.  
Nakladni 1486  
295 01 Mnichovo Hradiste  
Tel: +42 (0) 32 67 / 7 34 54  
Fax: +42 (0) 32 67 / 7 34 54  
info@jap-jacina.cz

## AUSTRIA

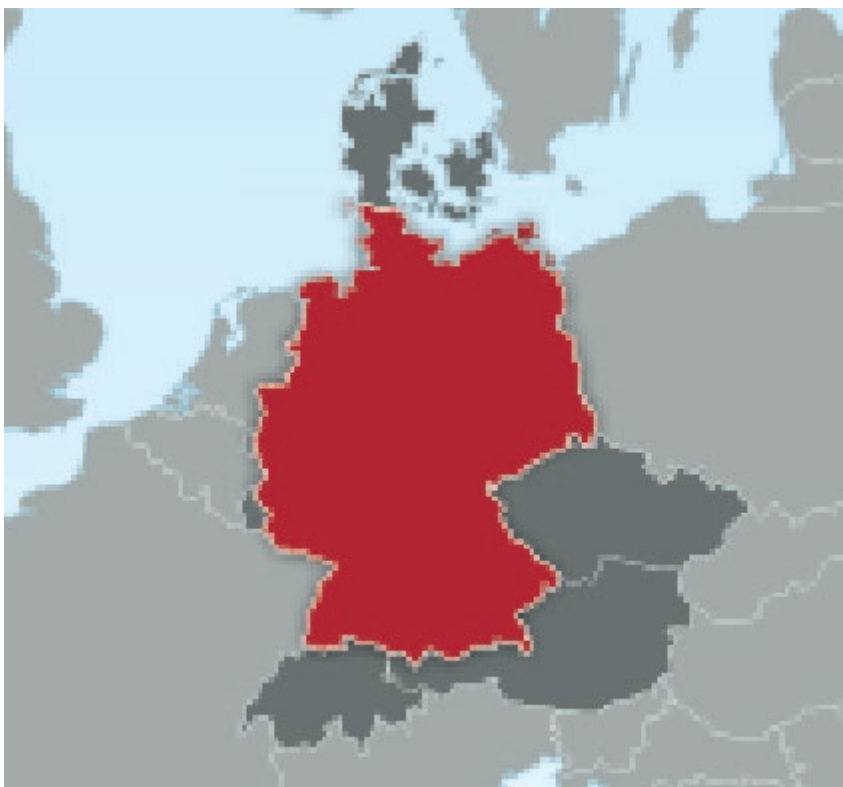
Peter Lagler e.U.  
Am Frachtenbahnhof  
3500 Krems  
Tel: +43 2732 / 70 522  
Fax: +43 2732 / 70 522 30  
jansentore@peterlagler.at

## LUXEMBOURG

Glaeser - Betz S.A  
82 Grand Rue  
8510 Redange/Attert  
marc.dasbourg@glaesener-betz.lu

“At job interviews too, we like to give people a  
**pleasant surprise.**”

Sandra Janssen | Head of Human Resources





JANSEN TORE GmbH & Co. KG

Am Wattberg 51

26903 Surwold

Germany

[info@jansentore.com](mailto:info@jansentore.com)

Tel: +49 (0) 49 65 / 89 88-0

Fax: +49 (0) 49 65 / 89 88-88

[www.jansentore.com](http://www.jansentore.com)

