



JANSEN MARITIM

**More safety
on open sea**



JANSEN

Maritim

The Company

Jansen Maritim, a company of the Jansen Holding, is based in Aschendorf, Northern Germany.

Beside Jansen Maritim the Jansen Holding includes the companies Jansen Brandschutz, Jansen Tore and Jansen PU-Technik.

The company distinguishes itself by a broad product portfolio and is therefore leading supplier for smoke and fire protection doors, steel-glass doors, special solutions, soundproofing doors, industry doors and repair panels.



Jansen Maritim, the youngest member of the Jansen Holding, is specialized in fire protection products for ship building according to the latest ship building guidelines IMO and MED and profits from the long-standing experience of the Jansen Group in the areas of fire protection, sound proofing and panel production.

Jansen Maritim offers different services, such as consultation, planning and installation.

JANSEN

Maritim

Convincing quality!

Our aim is to be always one step ahead through innovative solutions and the development of new technologies to be able to offer our customers high-quality products. This is verified, among others, by the certification DIN EN ISO 9001:2008.

The products of Jansen Maritim convince by their quick and simple assembly as well as by highest claims regarding quality. Jansen develops and produces specific products in close cooperation with the customers according to their requirements.

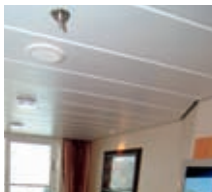
Jansen Maritim's standard program covers walls, ceilings, roller shutters, inspection hatches and doors. Due to their modular construction Jansen Maritim panels are also perfectly suited for structural engineering.



The portfolio encompasses:



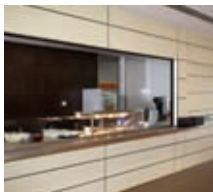
B-15/ A-30
Wall Panel



B-15/ A-30
Ceiling Panel



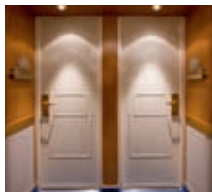
B-15/ A-30
Inspection Hatches



A-0
Roller Shutter



A-60 Doors



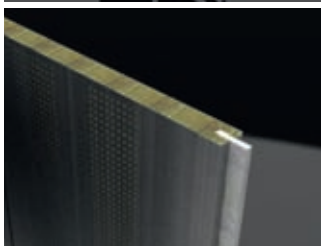
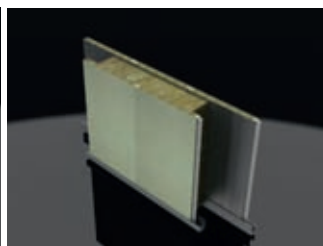
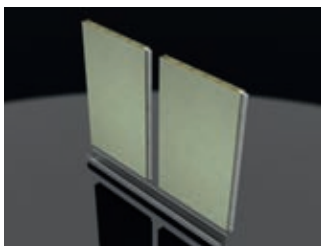
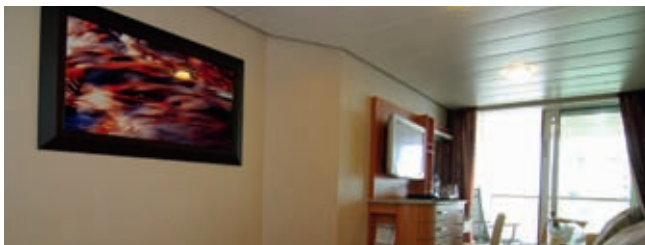
B-15 Doors

JANSEN MARITIM

B-15/ A-30 Wall Panels

Jansen Maritim Wall Panels

The modular room elements convince due to their sandwich construction with two surface layers and internal mineral wool. They find application for the most diversified requirements. The special connection system guarantees a high level of stability and simplifies assembly.



JANSEN MARITIM

B-15/ A-30 Ceiling Panels

Jansen Maritim Ceiling Panels

The ceiling panels are available in two different versions: CP-30 and CP-25-C (as well CP-55-C). Both versions have a special connection system and convince with their quick and neat assembly as well as disassembly. They have comparatively a low weight and a low panel strength. A special rail-system of CP-25-C and CP-55-C enables removal of each second panel.



JANSEN MARITIM

B-15/ A-30 Inspection Hatches

Jansen Maritim Inspection Hatches

Jansen Maritim inspection hatches are extremely versatile. They can be implemented for different areas, such as walls or ceilings. Due to the implication of sophisticated hinges (no visible case) and special closing mechanisms an identical outer appearance is made possible, e. g. by identical surface structures. All hatches are equipped with a stainless steel piano hinge.



JANSEN MARITIM A-O Roller Shutter

Jansen Maritim Roller Shutter

In terms of installation Jansen Maritim Roller Shutter excel through their low demand on space and are available in steel or stainless steel execution. It exclusively fitted with motor drives so it can be used multifunctionally as permanent functional door.



JANSEN MARITIM

A-60 Doors

Jansen Maritim A-60 Doors

Jansen Maritim A-60 doors convince by a sturdy and high-quality execution with high sound-proofing values which ensure an optimum of security. In addition to a thickness of door leaf with 62 mm and a frame out of 1.5 mm galvanized steel they convince by circumferential finish moulding of stainless steel, lowerable sill and integrated rubber seal.



Already inspected!

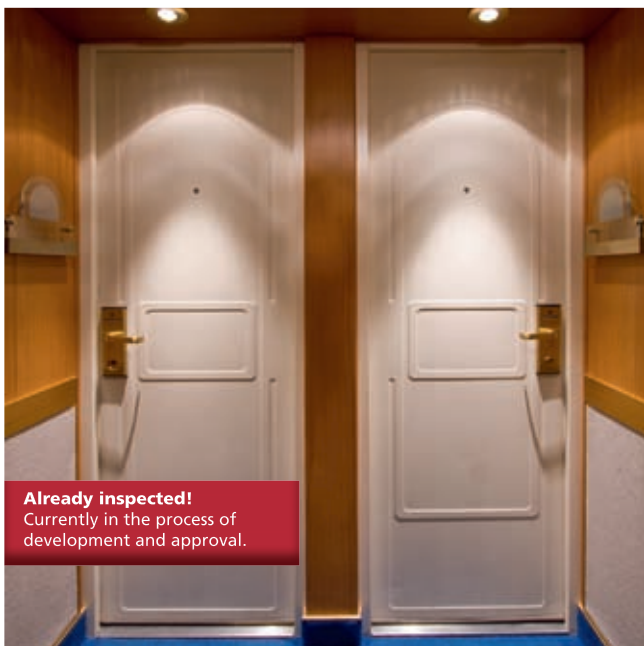
Currently in the process of development and approval.

JANSEN MARITIM

B-15 Doors

Jansen Maritim B-15 Doors

Jansen Maritim B-15 doors characterize themselves by lowerable floor seals, embedded frame seals and adjustable stainless steel hinges. By a sturdy and high-quality execution with high sound-proofing values they ensure an optimum of security.



Already inspected!

Currently in the process of development and approval.



Photos: A. Depping, iStockphoto.com



**Jansen Maritim
GmbH & Co. KG**

Emsstraße 4
26871 Papenburg-Aschendorf
Germany

Tel. +49 (0) 4962 / 99 6 99 0
Fax +49 (0) 4962 / 99 6 99 69

info@jansenmaritim.com
www.jansenmaritim.com